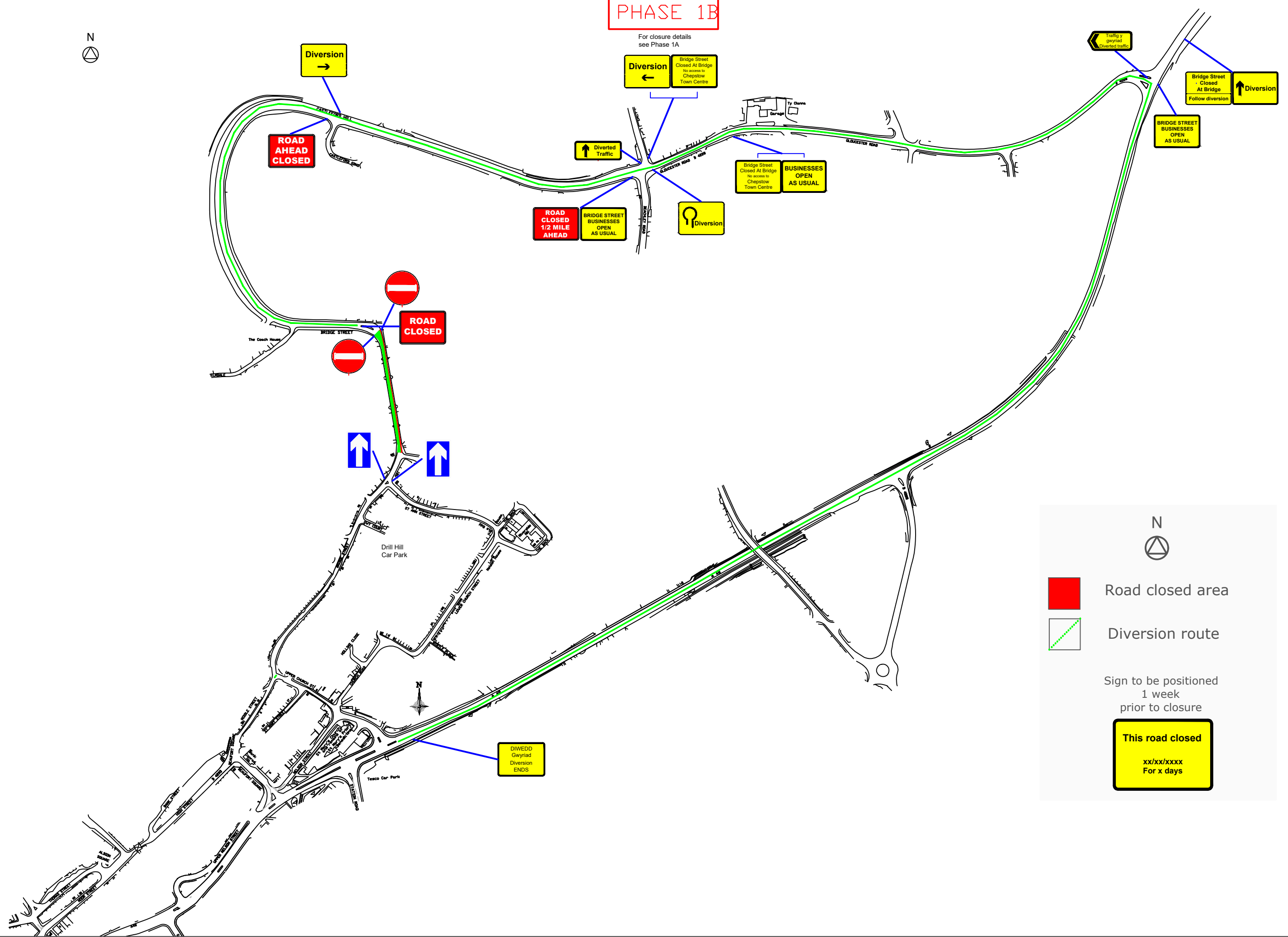


PHASE 1B

For closure details see Phase 1A



Road closed area
 Road closed area

Diverion route
 Diverion route

Sign to be positioned 1 week prior to closure

This road closed
 xx/xx/xxxx
 For x days

| | | | | | | | | | |
|-------|------------|---|------|--|--|--|--|--|--|
| Drn: | ND | Forest Traffic Signals Ltd, Forest House, Broad Quay Road, Felnax Ind Est, Newport, NP19 4PN Tel: 01633 284700 Fax: 01633 283212 | Rev. | | | | | | |
| Chk: | BB | | Dm. | | | | | | |
| App: | | | Chk. | | | | | | |
| Date: | 14/02/2019 | | App. | | | | | | |

| Rev. | Dm. | Chk. | App. | Description | Date |
|------|-----|------|------|-------------|------|
| | | | | | |
| | | | | | |

Client: Morrison Utilities

Project: St Ann Street, Chepstow NP15 1GA

Drawing: Traffic management arrangement

Drawing no: FNMU01.0044.02

Revision:

Scale: NTS